

INTRODUCTION

Change the Time and Time Zone.

APPLIES TO:

- F5D8232au4



Before you begin:

You will need:

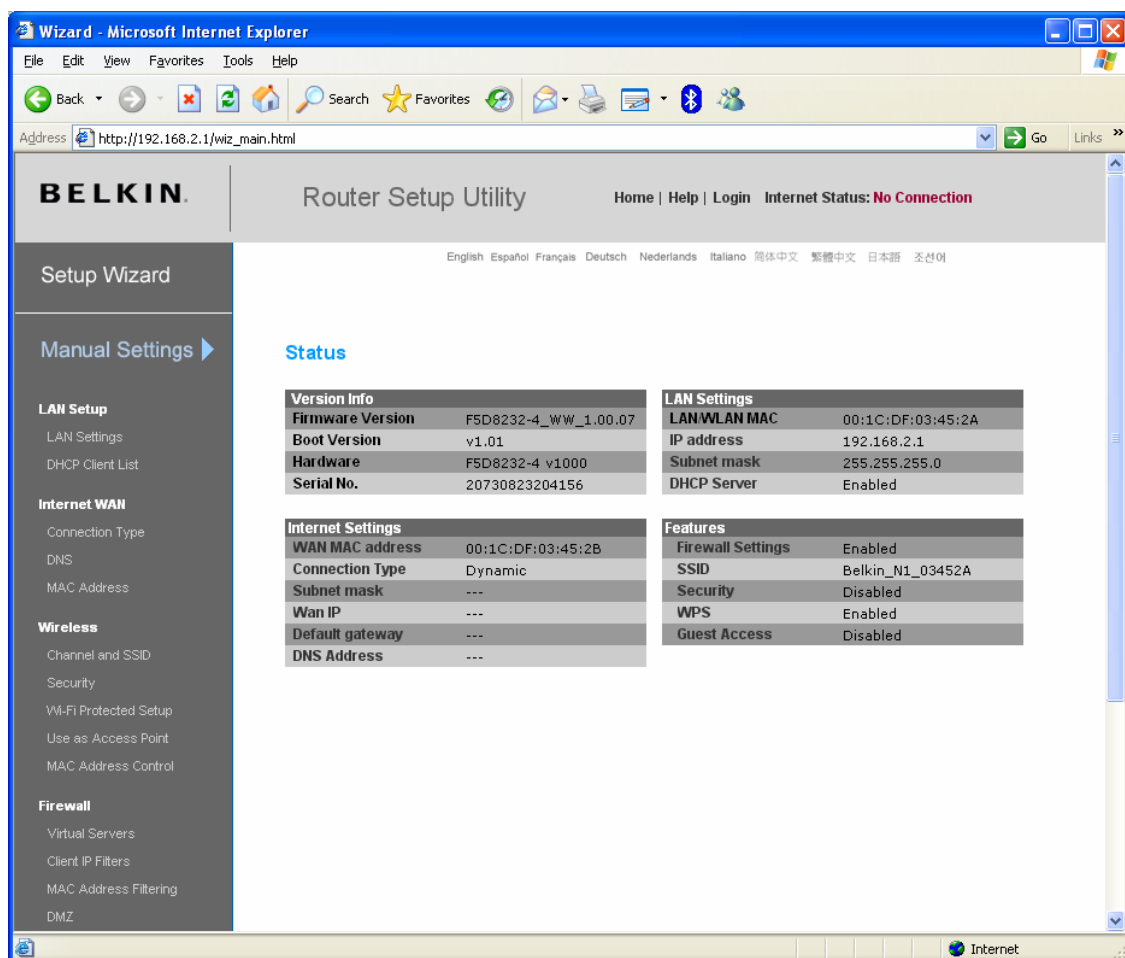
- Belkin N1 Vision router
- Power cable
- Network cable

Hardware check:

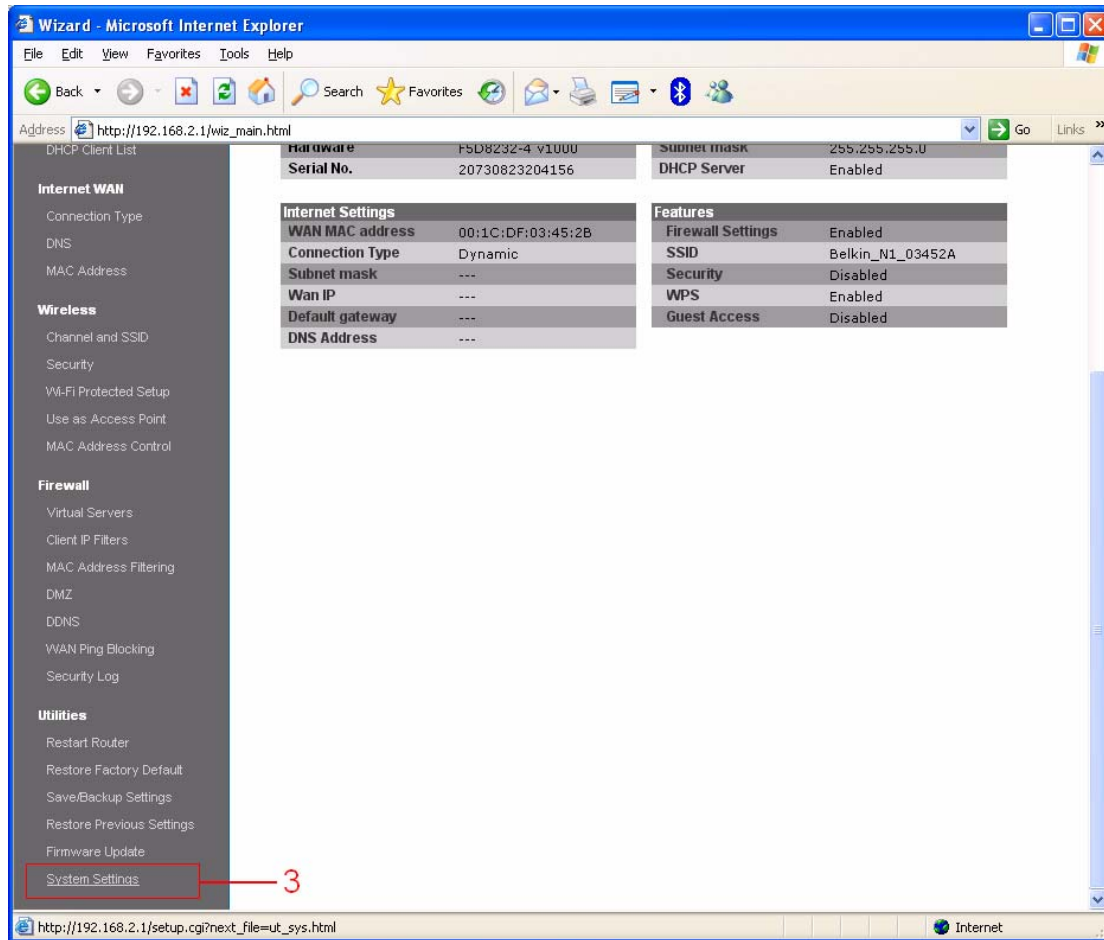
- Your computer is switched on
- The N1 Vision is switched on
- Network cable connected from computer to the N1 Vision

RESOLUTION:

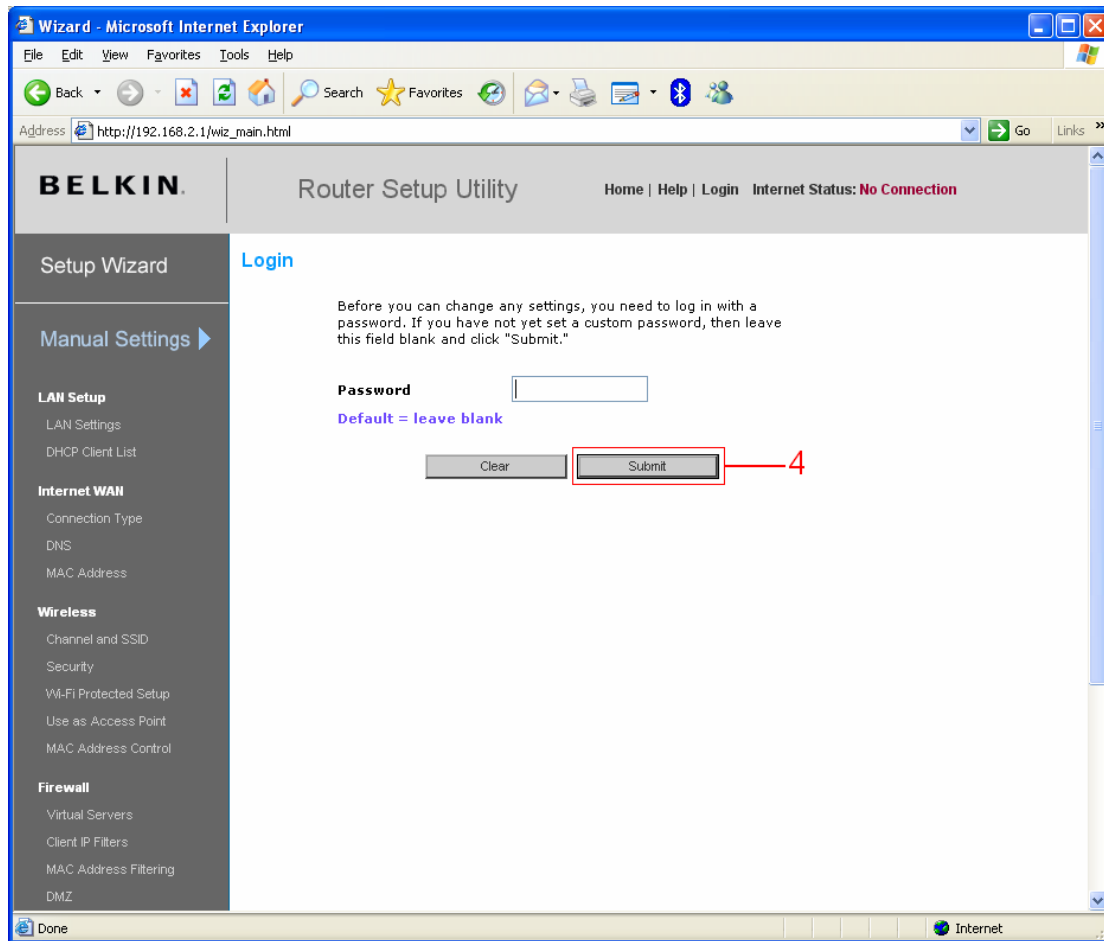
- 1) Open your web browser (Internet Explorer, Mozilla FireFox, Safari etc)
- 2) In the Address Bar, delete any text and type in **192.168.2.1** or [click here](#) to open the page directly



- 3) On the left hand side, scroll down and click on **System Settings** underneath **Utilities**.



4) Click on **Submit** to login, there is no password by default.



- 5) Scroll down to **Time and Time Zone**. Change the **Time Zone** to your current time zone area.

Utilities > System settings - Microsoft Internet Explorer

File Edit View Favorites Tools Help

Address <http://192.168.2.1/setup.cgi> Go Links >>

BELKIN. Router Setup Utility Home | Help | Logout Internet Status: **Connected**

Setup Wizard

Manual Settings ▶

LAN Setup

- LAN Settings
- DHCP Client List

Internet WAN

- Connection Type
- DNS
- MAC Address

Wireless

- Channel and SSID
- Security
- Wi-Fi Protected Setup
- Use as Access Point
- MAC Address Control

Firewall

- Virtual Servers
- Client IP Filters
- MAC Address Filtering
- DMZ

Utilities > System settings

Administrator Password:
The Router ships with NO password entered. If you wish to add a password for more security, you can set a password here. [More Info](#)

- Type in current Password>
- Type in new Password>
- Confirm new Password >
- Login Timeout> (1-99 minutes)

Time and Time Zone: **September 25, 2007 01:00:38 PM**

Please set your time Zone. If you are in an area that observes daylight saving check this box. [More Info](#)

- Time Zone > 5
- Daylight Savings> ☒ Automatically Adjust Daylight Saving
- Primary NTP Server >
- Backup NTP Server >

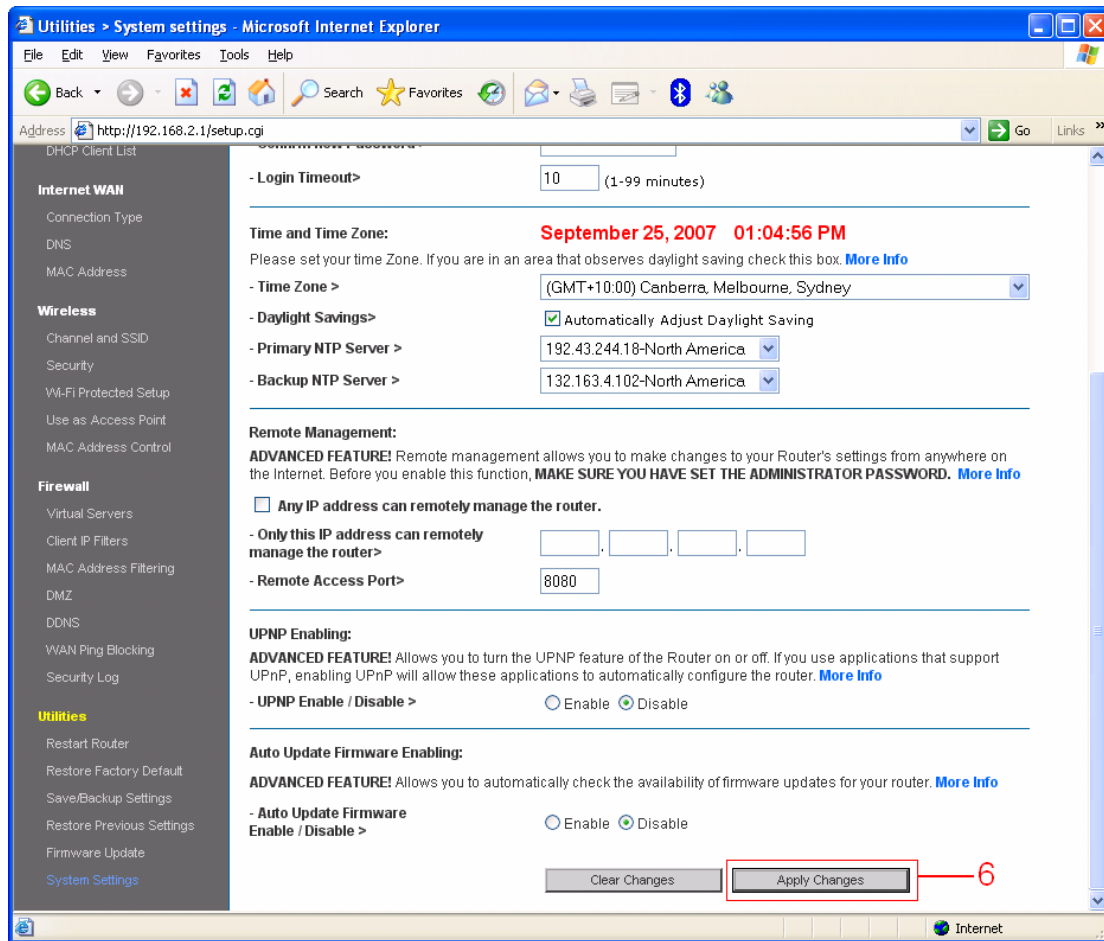
Remote Management:
ADVANCED FEATURE! Remote management allows you to make changes to your Router's settings from anywhere on the Internet. Before you enable this function, **MAKE SURE YOU HAVE SET THE ADMINISTRATOR PASSWORD.** [More Info](#)

☐ Any IP address can remotely manage the router.

- Only this IP address can remotely manage the router> . . .
- Remote Access Port>

Done Internet

6) Click on **Apply Changes** at the bottom of this page.



Congratulations! You have successfully changed the Time Zone settings. Your N1 Vision router should now display the correct date and time.